

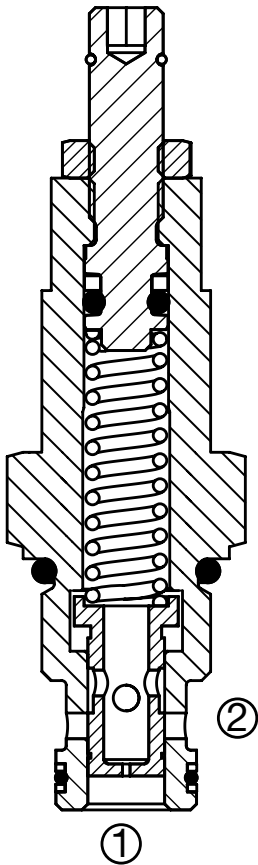
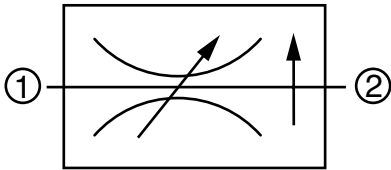
# FLOW CONTROL VALVES

## SR06-01

### Flow Regulator, Pressure Compensated, Restrictive Type

Up to 4 gpm (15 l/min) • 5000 psi (350 bar)

#### Hydraulic Symbol



#### Description

A screw-in cartridge, adjustable, pressure compensated, hydraulic flow regulating valve (*restrictive type*).

#### Operation

The SR06-01 maintains a constant flow from port 1 to port 2 based on the setting adjustment, regardless of pressure changes downstream of port 2. The flow rate is determined by a fixed control orifice and could be adjusted within a limited range. Reverse flow from port 2 to port 1 is at the value of the fixed control orifice and is non-pressure compensated.

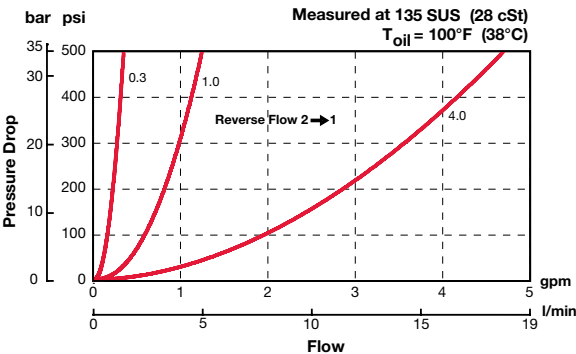
#### Features

- Excellent stability throughout flow range
- Desired setting may be locked down
- Adjustment screw cannot be backed out of the valve
- All external surfaces zinc-plated
- Hardened parts to ensure minimal wear and extend service life

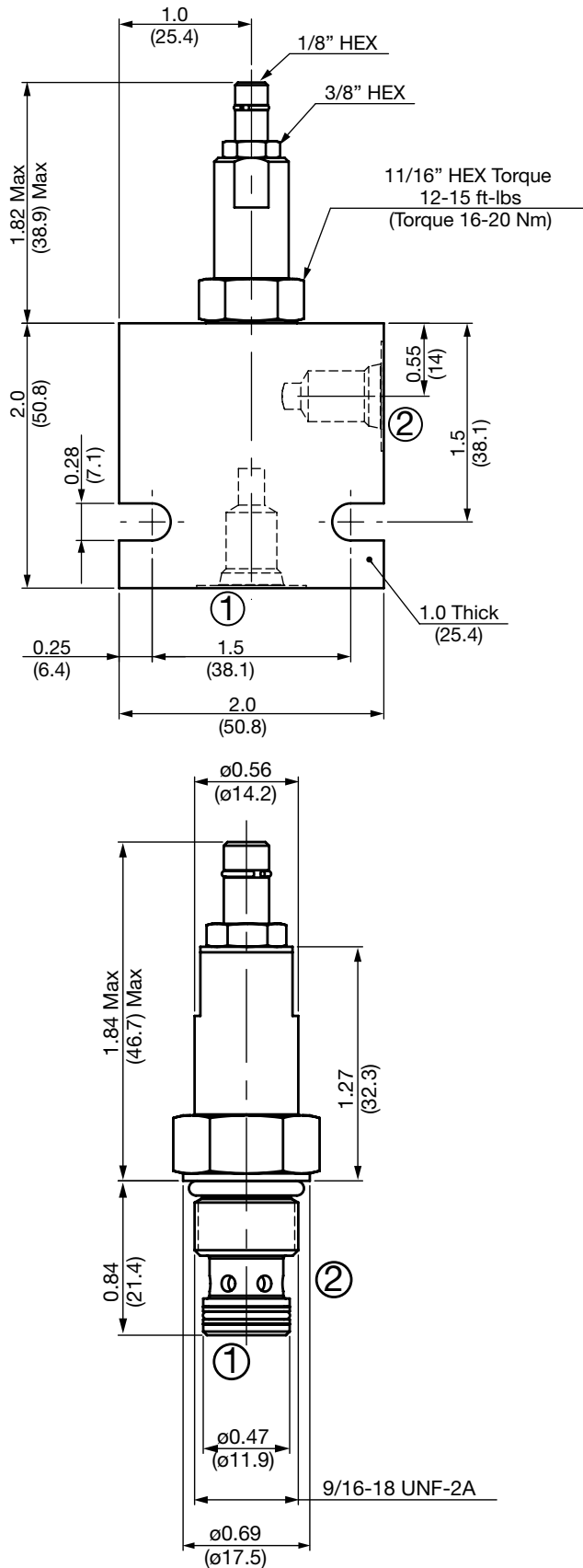
#### Specifications

Operating Pressure	5000 psi (350 bar)
Max. Operating Pressure, Port 2	3000 psi (210 bar)
Maximum Flow	4 gpm (15.2 l/min)
Flow Ranges	0.3 = 0.06 - 0.25 gpm (0.23 - 0.95 l/min) 1.0 = 0.25 - 1.0 gpm (0.95 - 3.78 l/min) 4.0 = 1.0 - 4.0 gpm (3.78 - 15.14 l/min)
Fluid Compatibility	Mineral-Based or Synthetics with lubricating properties
Viscosity	50 to 2000 SUS (7.4 to 420 cSt)
Filtration	21/19/16 or cleaner per (ISO 4406)
Installation	No orientation restrictions
Cavity	FC06-2 ( <i>see Line Bodies &amp; Cavities section</i> )
Cavity Tools	Rougher: 02582046 Finisher: 02582047
Cartridge Weight	0.05 lb (23 g)
Cartridge Material	Steel with hardened work surfaces. Zinc plated exposed surfaces. Buna N or Viton® o-rings. Solid thermoplastic polyester back-up rings.
Seal Kits	Buna-N P/N: 02610184 Viton® P/N: 02610185

#### Performance



## Dimensions



All measurements in inches (mm).  
Subject to technical modifications

## Model Code

**SR06-01-AS4-N-1.0 V 0.8**

### Valve Model

### Body & Ports

- C = Cartridge only
- AS4 = SAE-4 Ports, aluminum Body
- SS4 = SAE-4 Ports, steel Body

### Seals

- N = Buna-N
- V = Viton®

### Flow Rate

- 0.3 = 0.06 to 0.25 gpm (0.23 to 0.95 l/pm)
- 1.0 = 0.25 to 1.0 gpm (0.95 to 3.78 l/pm)
- 4.0 = 1.0 to 4.0 gpm (3.78 to 15.14 l/pm)

### Adjustment Options

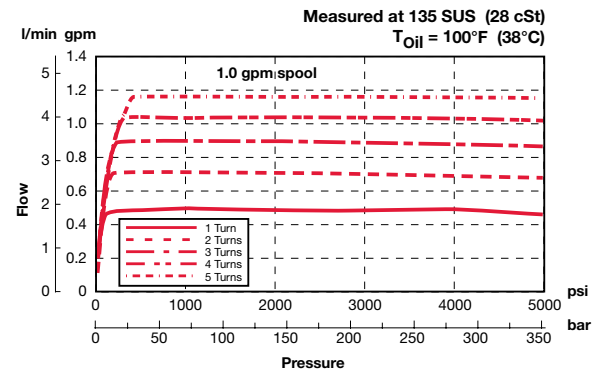
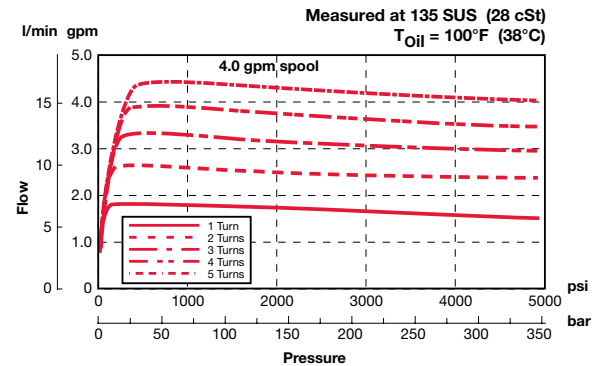
- V = Allen Head (Hex 1/8")

### Setting

- blank = Set at 50% of maximum flow for the range
- xxx = flow rate in gpm

Example: 0.8 = 0.8 gpm

## Performance



## Standard Line Bodies\*

Code	Part No	Material	Pressure Rating	Weight
FH062-AS4	02600491	Aluminum, anodized	3500 psi (245 bar)	0.34 lbs (0.15 kg)
FH062-SS4	02600490	Steel, Zinc plated	6000 psi (420 bar)	1.0 lbs (0.45 kg)

\*Please refer to Line Bodies & Cavities section for details